

مدرسة جيمس ميلينيوم، الشارقة
GEMS Millennium School
Sharjah

UNIFORM GUIDE

THREADS

INTRODUCTION ■ ■ ■

Dear Parent,

This guide has been put together to assist you on the following:

- Selecting the correct uniform for your child
- Identifying the correct size
- Maintaining the uniform
- Ordering
- Information on customer service

We hope that you will find this guide useful. If you have any comments or suggestions relating to this guide kindly email these to support@threadsme.com.

We wish your child all the success for this academic year and would like to thank you for your continued support.

threads™

INDEX ■ ■ ■

PAGE NO.

• KG 1 - GRADE 4 BOYS	4
• KG 1 - KG 2 GIRLS	5
• GRADE 5 - 12 BOYS	6
• GRADE 1 - 12 GIRLS	7
• UNISEX PE & WINTER	8
• UNIFORM CARE GUIDE	9
• HOW TO ORDER	10
• SIZING	11
• SIZING	12
• SIZING	13
• HOW TO MEASURE	14
• CUSTOMER SUPPORT	15

* All measurements referred to in this guide, are in inches.

مدرسة جيمس ميلينيوم، الشارقة
GEMS Millennium School
Sharjah

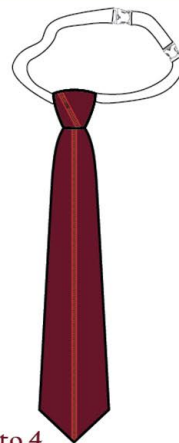
SHORT SLEEVE SHIRT



SHORTS



TIE



Grade 1 to 4

SOCKS & SHOES



BELT



SCHOOL BAGS WITH LOGO



PLEASE REFER TO THE SIZING GUIDE ON PAGE 11, 12 & 13
ALL COLOURS ARE FOR ILLUSTRATIVE PURPOSES ONLY.

DRESS WITH BLOOMER



SOCKS



SCRUNCHIE



BLACK SHOES



SCHOOL BAGS WITH LOGO



12 Inches Bag

SCHOOL BAGS WITH LOGO



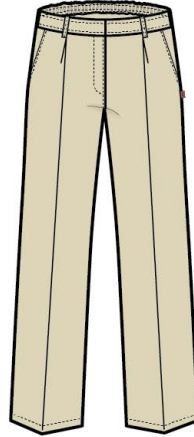
12 Inches Bag

PLEASE REFER TO THE SIZING GUIDE ON PAGE 11, 12 & 13
ALL COLOURS ARE FOR ILLUSTRATIVE PURPOSES ONLY.

SHORT SLEEVE SHIRT

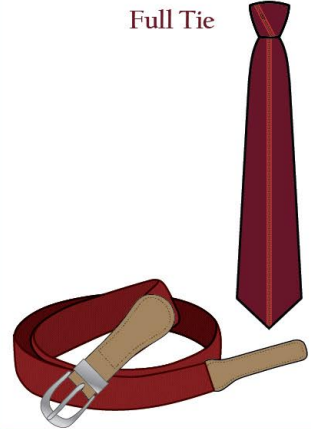


TROUSERS



TIE & BELT

Full Tie



SOCKS & SHOES



MAROON BLAZER



Grade 6 to 12

SCHOOL BAGS WITH LOGO

18 Inches bag



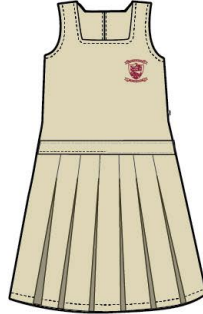
16 Inches bag

PLEASE REFER TO THE SIZING GUIDE ON PAGE 11, 12 & 13
ALL COLOURS ARE FOR ILLUSTRATIVE PURPOSES ONLY.

SHORT SLEEVE SHIRT

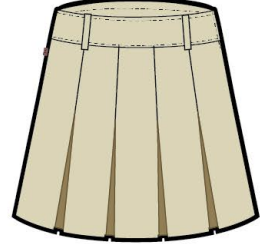


PINAFORE



KNEE LENGTH SKIRT

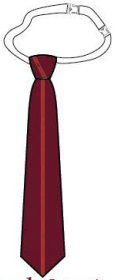
Grade 5 to 12



TIES

Elastic Tie

Full Tie



Grade 1 to 4

SCRUNCHIE



MAROON BLAZER



Grade 6 TO 12

BLACK SHOES/WHITE SOCKS



BELT



SCHOOL BAGS WITH LOGO

18 Inches bag



16 Inches bag

PLEASE REFER TO THE SIZING GUIDE ON PAGE 11, 12 & 13
ALL COLOURS ARE FOR ILLUSTRATIVE PURPOSES ONLY.

UNISEX POLO KGI-GRADE12(YELLOW)



UNISEX POLO KGI-GRADE12(RED)



UNISEX POLO KGI-GRADE12(BLUE)



UNISEX POLO KGI-GRADE12(GREEN)



UNISEX KGI AND KG 2



UNISEX TRACK PANT 1-12



WHITE SOCKS



UNISEX PULLOVER



WHITE SHOES

Lace shoes



Velcro shoes

PLEASE REFER TO THE SIZING GUIDE ON PAGE 11, 12 & 13
ALL COLOURS ARE FOR ILLUSTRATIVE PURPOSES ONLY.

UNIFORM CARE GUIDE

The following guidelines will help you gain longevity from your garment.

WASH CARE SYMBOLS



SKIRTS/TROUSERS/PINAFORE /SHORTS

Wash at 40 °C. Higher temperatures will cause shrinkage, affect the colour or weaken the fibres. Wash dark colours separately. Avoid strong fabric conditioners as they can break the fibres.

Do not bleach. Do not tumble dry. Pleated garments as the pleats will disappear. For best results simply drip dry after washing.

Warm iron if needed (150°C maximum). If you want to improve the creases, use a steam iron or a clean damp cloth, with a regular iron. Do not iron on top of Print or Embroidery directly, please iron reverse side. Never use a hot iron directly on the garment.



SPORTS SHORTS/TRACK PANTS/PE POLO SHIRTS

Wash at 40 °C. Higher temperatures will cause shrinkage, affect the colour or weaken the fibres. Wash dark colours separately. Remove promptly. Avoid strong fabric conditioners.

Do not bleach. These products will dry very quickly, if left to dry naturally, but if you want to do tumble dry, pls do it in cool/low setting & remove promptly. Drip dry after washing.

Ironing is not necessary for these products. However if you still want to iron, use a cool iron setting (110°C maximum). Do not iron directly on the garment, place a clean damp cloth between the garment and the iron. Do not iron with excessive heat as this makes the fabric brittle. Do not iron on top of print or Embroidery directly, please iron on reverse side.



SHIRTS - BLOUSES 65% Polyester, 35% Cotton weave

Can be machine washed on a Gentle/ polyester/easy care/delicate Setting, with upto 40°C. Avoid strong fabric conditioners. Wash dark colours separately.

Do not bleach. These garments can be tumble dried on a cool/low setting. If the temperature is higher the fibres can be damaged and shrinkage may occur.

With these garments ironing is not always necessary if it is hanged during drying, after washing. However if you still want to ironing, change the setting to synthetic/ cool iron (110°C maximum) and do iron. Ironing will be easier if the garment is slightly damp. Do not iron on top of print or Embroidery directly please iron on reverse side.



Knitted fabrics
100% acrylic;
combinations of:
wool/nylon, wool/acrylic,
wool/polyester (jumpers,
cardigans, scarves &
hats); cotton/acrylic;
cotton/polyester;
cotton/nylon

Turn the garment inside out before washing, to reduce the loose fibres adhering to the outer surface of other garments. Use Cool 30°C washing with gentle/ delicate/wool setting, with a short spin. Always wash the garment separately, or with similar colour garments. Use only mild detergent if required. Some fabric conditioners may harm the garment fibres thereby increasing pilling

Do not bleach. Do not tumble dry, the fabric can be damaged and the neck, welt and cuffs can lose their elasticity. Always dry FLAT and Dry in the shade (direct sunlight will harm the garment).

NEVER iron on the face fabric of the garment, as it will change the appearance of the garment and cause shine. Always iron the inside of the garment.

SHOE CARE - BLACK

Simply remove excess dirt with a cloth and/ or a brush and apply the cream shoe polish never liquid shine evenly to your shoes.

Make it a point to polish your shoes once in 2 days to restore the appearance of your shoes.

Store your shoes using a shoe tree, this will help the shoe retain its shape. If you don't have a shoe tree, stuff the toe cap with newspaper or tissue. Never store shoes near direct heat.

SHOE CARE - WHITE

Avoid washing them in a washing machine and especially avoid putting them in the dryer.

Always use a mild detergent and a soft brush to clean them and air dry the shoes after washing.

Once clean, consider spraying canvas shoes with a "Scotchguard" type fabric protector. Test the spray on the tongue of the shoe to make sure it won't stain.

* KINDLY NOTE THAT ANY PRINTS / LOGOS / EMBELLISHMENTS MUST NOT BE IRONED ON DIRECTLY BUT INSTEAD ON THE REVERSE.

- Visit our retail shop at any of the following locations:
 - Al Nahda, Opp NMC Hospital.
 - Al Quoz, behind Golden and Diamond Park, next to Arab Tech, Near First Gulf Metro Station.

(For location map please visit - www.threadsme.com or email us on support@threadsme.com) open between 9:30am - 7:30pm, Saturday - Thursday. Closed on Friday and public holidays.
- You can now shop online at www.threadsme.com, where you will need to first register, fill out the order form and complete the online payment. Subject to availability your order will be dispatched within 2 - 4 working days to your registered / requested location. Once your order has been dispatched you will be notified of the tracking number and you can track your order online.
- Made to measure(custom-made uniforms) option is also available if your preferred size is not in stock. The standard delivery time is 15 days during the off peak seasons and will extend up to 30 days during the peak seasons . To request a made to measure form or require any assistance on made to measure kindly send an email to support@threadsme.com, alternatively you can request an online appointment at www.threadsme.com
- At Threads we take our commitment to customer service very seriously. Customer concerns and queries can be registered at support@threadsme.com or through our toll free number (800-THREADS). A customer services representative will respond to your query within 24 working hours.

SIZING GUIDE ■ ■ ■

UNISEX SHIRT

SIZE	2	4	6	8	10	12	14	16	18	20	22	24	26	
CHEST	27	29	31	33	34.5	37	38	40	42	44	46	48	50	
LENGTH	17.5	18.5	20	22	24	25	25.5	26.5	27.5	28.5	29.5	30	30.5	

GIRLS BLOUSE

SIZE	2	4	6	8	10	12	14	16	18	20	22	24
CHEST	26	28	30	32	32.5	35.5	36	40	41	44	47	48
LENGTH	16.25	18	18.5	20.5	21	22.25	23.25	24.75	26.25	27.5	28.25	29

TROUSERS

SIZE	2	4	6	8	10	12	14	16	18	20	22	24	26	28	
FITS WAIST	16-20	17 21.5	18-23	19.5 24.5	21-26	22.5 28	24-30	25.5 32	27-34	28.5 35	30-36	31.5 35.5	33-39	34.5 40.5	
LENGTH	22	24	26	28	30	32	34	36	38	40	42	44	46	48	

SKIRTS (KNEE LENGTH)

SIZE	6	7	8	9	10	11	12	13	14	15	16
WAIST	23	25	27	29	31	33	34	37	40	43	46
LENGTH	23.5	23.5	23.5	23.5	24.5	24.5	24.5	25	25	26	26

PINAFORE

SIZE	4	6	8	10	12	14	16
CHEST	24	26	28	30	32	34	36
LENGTH	23	25	27	29	31	33	35

SHORTS

SIZE	2	4	6	8	10
FITS WAIST	18-23	19-24	20-25	22-27	24-29
LENGTH	11.75	12.5	13.75	15.25	16.5

* ALL MEASUREMENTS IN INCHES

THESE SIZES ARE ONLY A GUIDE AND MAY VARY FOR THE INDIVIDUAL BODY TYPE.

SIZING GUIDE ■ ■ ■

UNISEX PE POLO

SIZE	22	24	26	28	30	32	34	36	38	40
CHEST	21	23	26	29	32	34	37	40	43	47
LENGTH	15	16	17.5	19	20.5	22	23.5	25	26.5	28.5

UNISEX TRACK

SIZE	22	24	26	28	30	32	34	36	38	40	42	44	46	48
FITS WAIST	15-25	16-26	18-28	18-31	20-30	20-32	22-34		24-37	22-39	26.5-39.5	26.5-42	27.5-43	28-45
LENGTH	21	23	26.5	27	29.5	31	34.5		38	39	40.5	42	43.25	44

PT SHORTS

SIZE	2	4	6	8	10	12	14	16	18	20
WAIST	16.5 27	17.5 29	18.5 31	19.5 33	21-35	22-37	24-41	26-43	28-45	30-47
LENGTH	23.5	23.5	23.5	23.5	24.5	24.5	24.5	25	25	26

DRESS

SIZE	2	4	6	8	10	12
CHEST	24	28	30	32	34	36
LENGTH	221	25	27	29.5	31	33

UNISEX PULLOVER

SIZE	24	26	28	30	32	34	36	38	40	42	44
CHEST	26	26	26.5	30		34		35	36	38	40
LENGTH	17.25	18.25	19.5	19.5		21.5		24.5	26.5	27	27

TIES

FULL TIE LENGTH	48	52	56	60	
ELASTIC TIE LENGTH	10	12	15	16	

* ALL MEASUREMENTS IN INCHES

THESE SIZES ARE ONLY A GUIDE AND MAY VARY FOR THE INDIVIDUAL BODY TYPE.

SIZING GUIDE ■ ■ ■

SOCKS

SIZE	XS	S	M	L	XL	2XL	3XL
FOOT LENGTH	15	17	19	21	23	25	27

BELT

SIZE	XS	S	M	L	XL	2XL	3XL
WAIST	18-22	23-27	28-32	33-37	38-42	43-47	48-52

SHOES

UK SIZE	9	10	11	12	13	1	2	3	3.5	4	4.5	5	6	7	8	9	10	11	12	13
EU SIZE	27	28	29	30	31	32	33	34	35	36	37	38	39	40	41	42	43	44	45	46

BLAZER

SIZES BOYS	24S	24R	24L	26	28R	28L	30	32S	32R	32L	34R	34L	36S	36R	36R	36L	38S	38L	38R	40S
SIZES GIRLS	2S	2R	2L	4R	6R	6L	8R	10S	10R	10L	12R	12L	14S	14R	14R	14L	16S	16L	16R	18S
CHEST	34	34	34	35	37.6	37.6	38	40	40	40	42	42	43.5	43.5	43.5	43.5	45.5	45.5	45.5	47.5
LENGTH	22	24.5	25	25	25.5	26.5	27	27	28.5	30	27.5	29	29	30.5	30	31	29	30	31	29

BLAZER CONTINUE

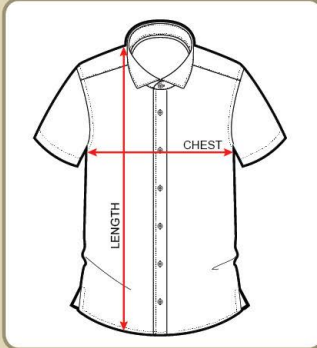
SIZE BOYS	40R	40L	42S	42R	42L	44R	44L	46
SIZE GIRLS	18R	18L	20S	20R	20L	22R	22L	24
CHEST	47.5	47.5	49	49	49	50.5	50.5	52
LENGTH	30.5	31.5	29	30.5	31.5	30	31.5	32.5

* ALL MEASUREMENTS IN INCHES

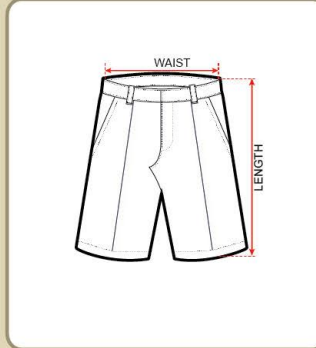
THESE SIZES ARE ONLY A GUIDE AND MAY VARY FOR THE INDIVIDUAL BODY TYPE.

HOW TO MEASURE ■ ■ ■

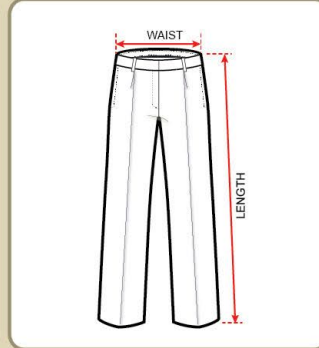
SHIRT / BLOUSE / PE POLO



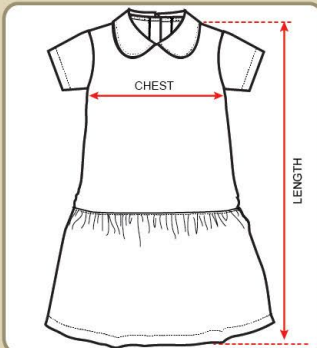
SHORTS / PE SHORTS



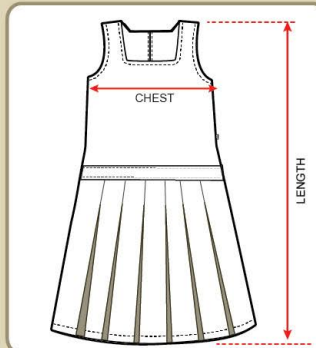
TROUSER / TRACK PANTS



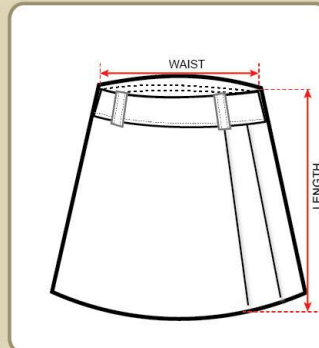
DRESS



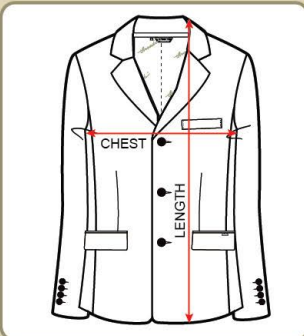
PINAFORE



SKIRT - KNEE & LONG



BLAZERS



PULLOVER



- At Threads we take our commitment to service very seriously and any customer concern registered, will receive an immediate acknowledgement and a response within 48 hours.
- You can visit our website at www.threadsme.com and fill out an enquiry form if you wish for a customer service agent to contact you about an order you may have placed or intend to place.
- If you wish to register a concern on any matter related to the product or staff, please call our toll free no. 800-Threads(8473237) where our customer service agent will register your concern and provide you with a case id which can be quoted in all future correspondences. Alternatively you may also choose to send us an email at support@threadsme.com
- In the event you are not satisfied with the solution offered please call our offices, quote your case Ref. no. and ask to speak to our head of operations. Should he not be able to provide you with a solution in reasonable time you can write to ceo@threadsme.com